

<b>OFFICE/DIVISION</b>	Policy and Plans Division (PPD)/ Policy Development and Planning Section (PDPS)
<b>CLASSIFICATION</b>	Simple
<b>WHO MAY AVAIL?</b>	Researchers such as students, academe, other government agencies, including members of other branches of government, local and international organizations or research institutions and other independent researchers who are requesting current and secondary SWD data and statistics from the DSWD.

<b>CHECKLIST OF REQUIREMENTS</b>	<b>WHERE TO SECURE</b>
Request Letter	Requesting Party

# CITIZEN'S CHARTER



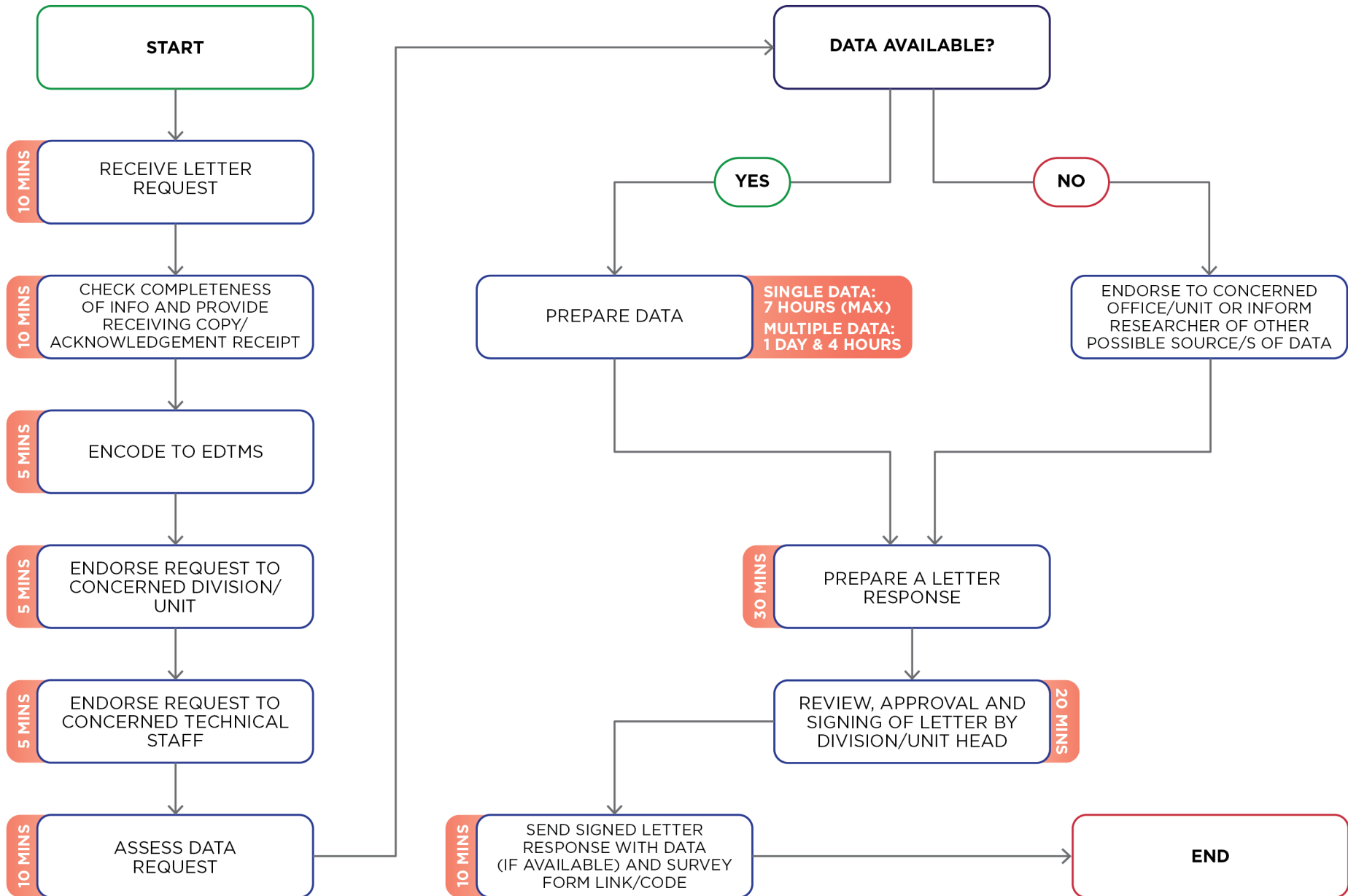
**Maagap at Mapagkalingang Serbisyo!**



**Department of Social Welfare and Development - Field Office VIII**  
**Policy and Plans Division - Policy Development and Planning Section**  
 Government Center, Brgy. Candahug, Palo, Leyte  
**Email:** pu.fo8@dswd.gov.ph

**OBTAINING SOCIAL WELFARE AND DEVELOPMENT (SWD) DATA AND INFORMATION**

# OBTAINING SOCIAL WELFARE AND DEVELOPMENT (SWD) DATA AND INFORMATION



**TOTAL TURNAROUND TIME: SINGLE DATA - 1 DAY & 15 MINS    MULTIPLE DATA - 1 DAY, 5 HOURS, & 15 MINS    NO DATA - 1 HOUR & 45 MINS**