

OFFICE/DIVISION	Policy and Plans Division (PPD)/ Policy Development and Planning Section (PDPS)
TYPE OF TRANSACTION	G2C - Government to Citizen G2G - Government to Government
CLASSIFICATION	Highly Technical
WHO MAY AVAIL?	External researchers (e.g., students, academe, other government agencies, including members of other branches of government, local and international organizations or research institutions, and other independent researchers, including DSWD personnel researching to pursue higher academic education) who intend to conduct research studies related to or involving the DSWD

CHECKLIST OF REQUIREMENTS	
If request shall not undergo Research Protocol:	
1. Request letter	Researcher
If request shall undergo Research Protocol:	
1. Request letter	Researcher
2. Research Request Form	PDPS
3. Research Brief	PDPS
4. Research Instruments	Researcher



Maagap at Mapagkalingang Serbisyo!

Department of Social Welfare and Development - Field Office VIII
Policy and Plans Division - Policy Development and Planning Section
Government Center, Brgy. Candahug, Palo, Leyte
Email: pu.fo8@dswd.gov.ph

 **Maagap at Mapagkalingang Serbisyo!**
#BawatBuhayMahalagaSaDSWD

 www.fo8.dswd.gov.ph
 @dswdeasternvisayas

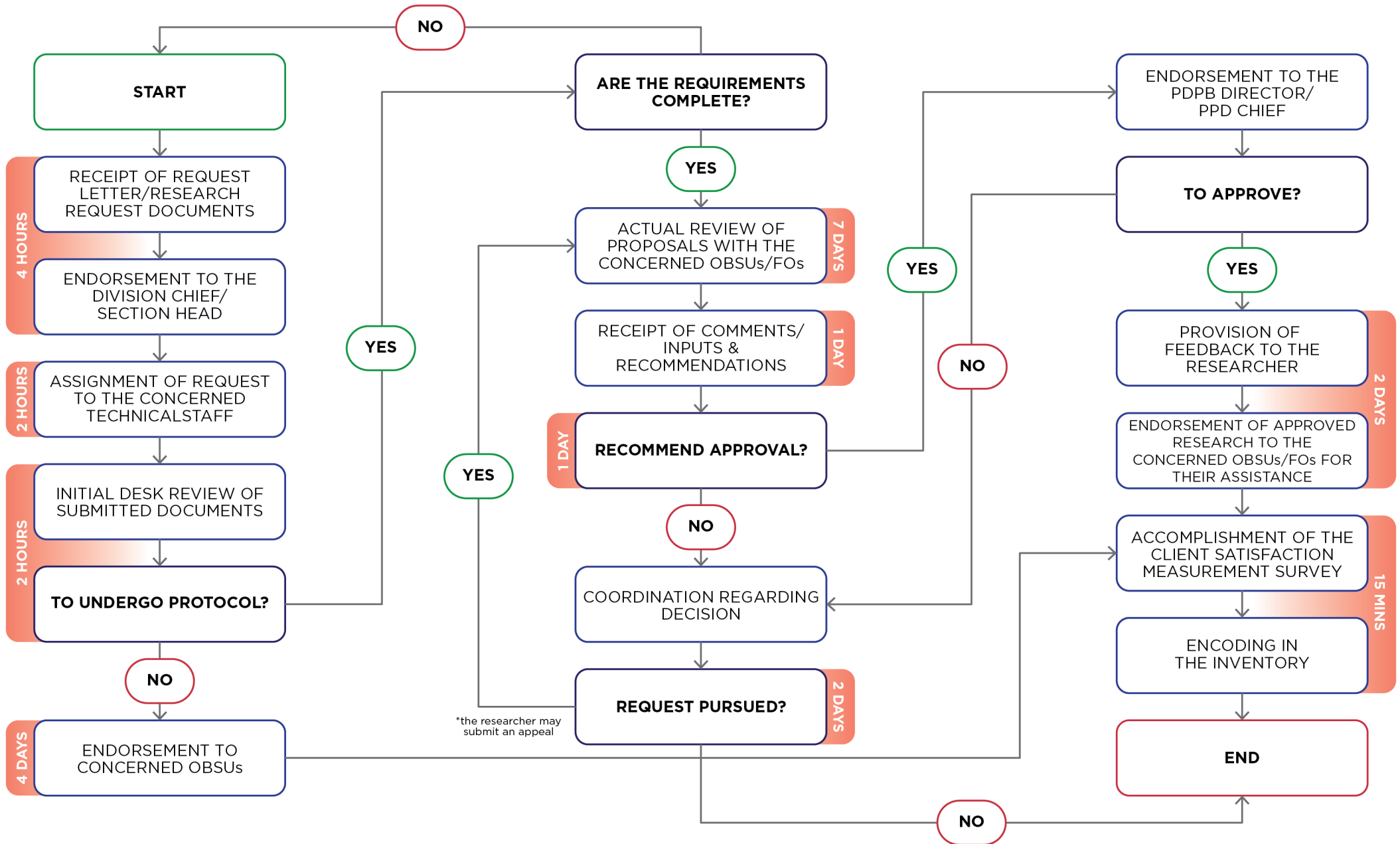


CITIZEN'S CHARTER



APPROVAL FOR THE CONDUCT OF RESEARCH STUDY AND ACQUIRING PRIMARY DATA FROM DSWD OFFICIALS/PERSONNEL, BENEFICIARIES, AND CLIENTS

APPROVAL FOR THE CONDUCT OF RESEARCH STUDY AND ACQUIRING PRIMARY DATA FROM DSWD OFFICIALS/PERSONNEL, BENEFICIARIES, AND CLIENTS



TOTAL TURNAROUND TIME: SHALL NOT UNDERGO PROTOCOL - 5 WORKING DAYS SHALL UNDERGO PROTOCOL - 12 WORKING DAYS